

Anti-GDF15 hIgG4 Reference Antibody (Visubio)

Product Information

| | |
|------------------------|---|
| Product Name | Anti-GDF15 hIgG4 Reference Antibody (Visubio) |
| Storage temp. | Store at 2-8°C short term (1-2 weeks).Store at $\leq -20^{\circ}\text{C}$ long term. Avoid repeated freeze-thaw. |
| Catalog# / Size | GM-87992MAB-1mg / 1 mg GM-87992MAB-5mg / 5 mg GM-87992MAB-25mg / 5 mg*5 vials GM-87992MAB-50mg / 50 mg GM-87992MAB-100mg / 50 mg*2 vials |

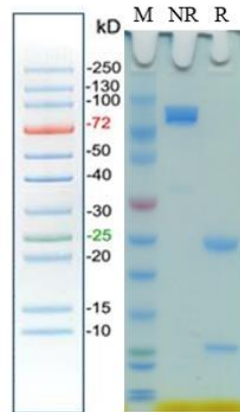
Antibody Information

| | |
|--------------------------|--|
| Expression System | CHO |
| Aggregation | < 5% as determined by SEC-HPLC |
| Purity | > 95% as determined by SDS-PAGE |
| Endotoxin | < 1 EU/mg, determined by LAL gel clotting assay |
| Sterility | 0.2 μm Filtered |
| Target | GDF15 |
| Clone | visugromab |
| Alternative Names | GDF-15, HG, MIC-1, MIC1, NAG-1, PDF, PLAB, PTGFB |
| Source/Isotype | Human IgG4 (S228P), Kappa |
| Application | Flow cytometry; Bioactivity-ELISA |
| Description | Growth/differentiation factor 15 is a protein that in humans is encoded by the GDF15 gene. It is a protein belonging to the transforming growth factor beta superfamily, and it has attracted considerable attention due to its ability to curb food intake and promote weight loss in rodent models of obesity. ¹ GDF15 is expressed by multiple tissues, primarily the liver and the kidney, but also in white (WAT) and brown adipose tissue (BAT) and skeletal muscle and plays an important part in the integrated cellular stress response. |
| Formulation | phosphate-buffered solution, pH 7.2-7.4. |

Version:3.1

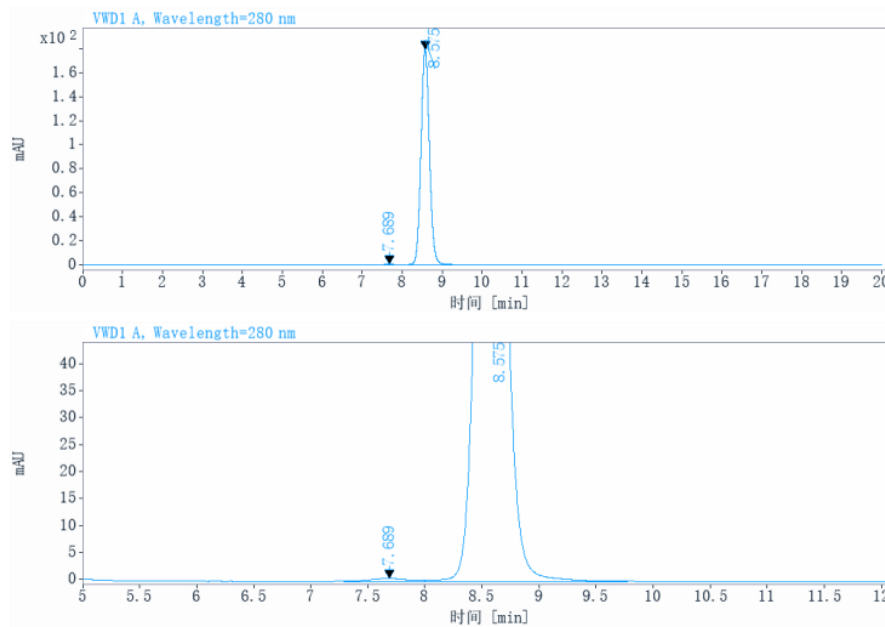
Data Examples

SDS-PAGE



On SDS-PAGE under reducing (R)/non-reducing(N-R) condition. The gel was stained overnight with Coomassie Blue. The purity of the protein is greater than 95%.

SEC-HPLC



The purity of this product is more than 95% verified by SEC-HPLC

Flow cytometry

Membrane Bound H₂GDF15 CHO-K1 Cell Line (Catalog # GM-C31025) was stained with Anti-GDF15 hIgG4 Reference Antibody (Visubio) (Catalog # GM-87992MAB) or isotype control antibody, followed by anti-Human IgG APC-conjugated Secondary Antibody .

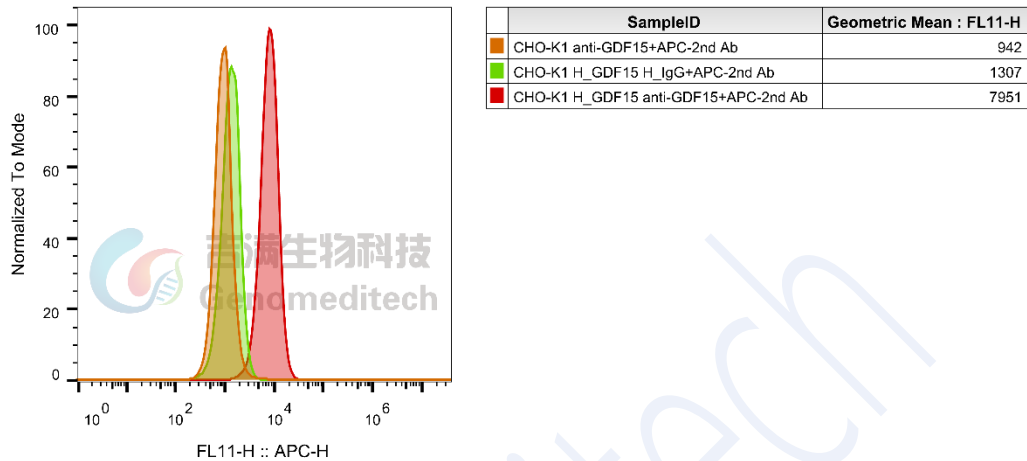


Fig. FACS

Bioactivity-ELISA

Human GDF15 Protein; His Tag (Catalog # GM-87627RP) was immobilized at 1 µg/ml (100 µL/well). Increasing concentrations of Anti-GDF15 hIgG1 Reference Antibody (Visubio) (Catalog # GM-87992MAB) were added.

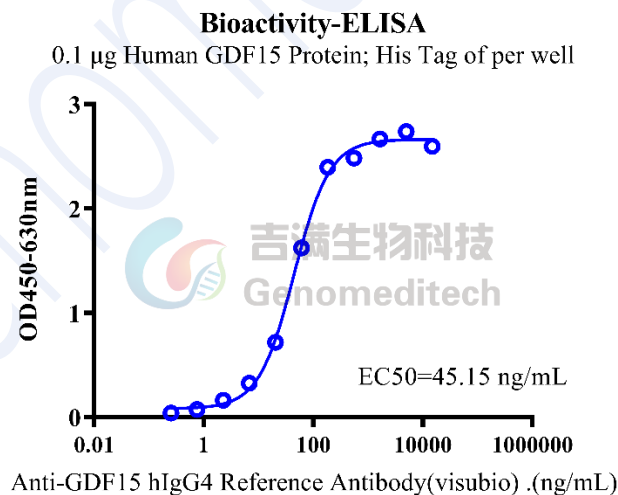


Fig. Assay